



Nature Med Inc dba House Exotics
#00000056ESPE92908314



Finished Product:

<i>Batch Name:</i>	HASHPEAPE-112224
<i>Strain Name:</i>	Peachy Pete
<i>Extraction Method:</i>	Ice Water Wash
<i>Manufacture Date:</i>	10/22/2024
<i>Tested At:</i>	SC Labs
<i>Infused or Prepared for sale by:</i>	Medmar Tanque Verde LLC #00000081DCPK00962019
<i>Distributed to:</i>	Desert Bloom ReLeaf Center #00000081DCPK00962019 #00000039ESEZ33667642, ReLeaf 85624 #00000144ESQK21738687

Starting Input:

<i>Type:</i>	Flower
<i>Cultivated By:</i>	Nature Med Inc dba House Exotics #00000056ESPE92908314
<i>Batch Name:</i>	PEAPE-101824
<i>Strain Name:</i>	Peachy Pete
<i>Harvest Date:</i>	9/21/2024

Arizona Department of Health Services' Warning:

Marijuana use can be addictive and can impair an individual's ability to drive a motor vehicle or operate heavy machinery. Marijuana smoke contains carcinogens and can lead to an increased risk for cancer, tachycardia, hypertension, heart attack, and lung infection.

Marijuana use may affect the health of a pregnant woman and the unborn child.

KEEP OUT OF REACH OF CHILDREN.

Using marijuana during pregnancy could cause birth defects or other health issues to your unborn child.

Eloy Operation
300 E Cherry Street
Cottonwood, AZ 86326
16189727426
Lic#: 00000056ESPE92908314

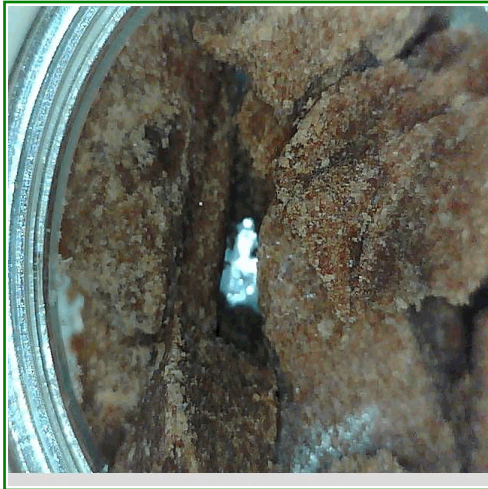
FINAL

Sample: S412065-03
CC ID#: 2412C4L0070.3488
Lot#: N/A
Batch#: HASHPEAPE-112224
Batch Size: N/A
Manufacture Date: 11/22/2024
Harvest Date: 09/21/2024

Sample Name: Hashish Peachy Pete
Strain Name: Peachy Pete
Matrix: Concentrates_Extracts
Amount Received: 64.9386 g

Sample Collected: 12/24/2024 12:31
Sample Received: 12/24/2024 14:34
Report Created: 12/31/2024 17:36

SAFETY



Microbials

PASS

**Residual
Solvents**

PASS

Mycotoxins

PASS

Pesticides

PASS

Metals

PASS

Terpenes

4.30%

Total Terpenes (Q3)

Cannabinoid Results

67.1%

Sum of Cannabinoids (Q3)

58.8%

Total THC

ND%

Total CBD

RATIO

1 : 0
THC CBD

Total THC= THCA * 0.877 + d9-THC
Total CBD= CBDA * 0.877 + CBD

Eloy Operation
300 E Cherry Street
Cottonwood, AZ 86326
16189727426
Lic#: 00000056ESPE92908314

FINAL

Sample: S412065-03
CC ID#: 2412C4L0070.3488
Lot#: N/A
Batch#: HASHPEAPE-112224
Batch Size: N/A
Manufacture Date: 11/22/2024
Harvest Date: 09/21/2024

Sample Name: Hashish Peachy Pete
Strain Name: Peachy Pete
Matrix: Concentrates_Extracts
Amount Received: 64.9386 g

Sample Collected: 12/24/2024 12:31
Sample Received: 12/24/2024 14:34
Report Created: 12/31/2024 17:36

Cannabinoids by HPLC-DAD - Compliance

Date Analyzed: 12/30/2024 Analyst Initials: DRF SOP: SOP-CHEM-003

Analyte	LOQ	Result	Result	Qualifier
	%	%	mg/g	
THCA	1.59	67.1	671	
d9-THC	1.59	<LOQ	< LOQ	
d8-THC	1.59	<LOQ	< LOQ	
CBDA	1.59	<LOQ	< LOQ	
CBD	1.59	<LOQ	< LOQ	
CBG	1.59	<LOQ	< LOQ	
CBN	1.59	<LOQ	< LOQ	
CBC	1.59	<LOQ	< LOQ	
Sum of Cannabinoids	1.59	67.1	671	Q3
Total THC	1.59	58.8	588	
Total CBD	1.59	ND	ND	
Total Cannabinoids	1.59	58.8	588	Q3

Total THC= THCA * 0.877 + d9-THC. Total CBD= CBDA * 0.877 + CBD.

Eloy Operation
300 E Cherry Street
Cottonwood, AZ 86326
16189727426
Lic#: 00000056ESPE92908314

FINAL

Sample: S412065-03
CC ID#: 2412C4L0070.3488
Lot#: N/A
Batch#: HASHPEAPE-112224
Batch Size: N/A
Manufacture Date: 11/22/2024
Harvest Date: 09/21/2024

Sample Name: Hashish Peachy Pete
Strain Name: Peachy Pete
Matrix: Concentrates_Extracts
Amount Received: 64.9386 g

Sample Collected: 12/24/2024 12:31
Sample Received: 12/24/2024 14:34
Report Created: 12/31/2024 17:36

Terpenes by GC-FID- Noncompliance

Date Analyzed: 12/30/2024 Analyst Initials: NSS SOP: C4-SOP-CHEM-012

Analyte	LOQ	Result	Result	Qualifier
	%	%	mg/g	
beta-Caryophyllene	0.019	1.32	13.2	Q3
beta-Myrcene	0.019	1.26	12.6	Q3
alpha-Humulene	0.019	0.540	5.40	Q3
d-Limonene	0.019	0.349	3.49	Q3
alpha-Bisabolol	0.019	0.223	2.23	Q3
trans-B-Farnesene	0.019	0.206	2.06	Q3
Linalool	0.019	0.169	1.69	Q3
Nerolidol	0.019	0.053	0.525	Q3
beta-Pinene	0.019	0.052	0.517	Q3
alpha-Pinene	0.019	0.034	0.342	Q3
Terpineol	0.019	0.032	0.324	Q3
Fenchol	0.019	0.026	0.257	Q3
Caryophyllene Oxide	0.019	0.021	0.206	Q3
Cedrol	0.019	0.019	0.193	Q3
Cedrene	0.019	<LOQ	< LOQ	Q3
Geranyl Acetate	0.019	<LOQ	< LOQ	Q3
Pulegone	0.019	<LOQ	< LOQ	Q3
Nerol	0.043	<LOQ	< LOQ	Q3
Citronellol	0.043	<LOQ	< LOQ	Q3
Borneol	0.029	<LOQ	< LOQ	Q3
Fenchone	0.019	<LOQ	< LOQ	Q3
Sabinene Hydrate	0.019	<LOQ	< LOQ	Q3
alpha-Phelladrene	0.019	<LOQ	< LOQ	Q3
Sabinene	0.019	<LOQ	< LOQ	Q3
p-Cymene	0.019	<LOQ	< LOQ	Q3
gamma-Terpinene	0.019	<LOQ	< LOQ	Q3
Eucalyptol	0.019	<LOQ	< LOQ	Q3
Guaiol	0.019	<LOQ	< LOQ	Q3
Geraniol	0.055	<LOQ	< LOQ	Q3
Isopulegol	0.019	<LOQ	< LOQ	Q3
Terpinolene	0.019	<LOQ	< LOQ	Q3
beta-Ocimene	0.019	<LOQ	< LOQ	Q3
alpha-Terpinene	0.019	<LOQ	< LOQ	Q3
delta-3-Carene	0.019	<LOQ	< LOQ	Q3
Camphene	0.025	<LOQ	< LOQ	Q3
Total Terpenes		4.304	43.03	

Eloy Operation
300 E Cherry Street
Cottonwood, AZ 86326
16189727426
Lic#: 00000056ESPE92908314

FINAL

Sample: S412065-03
CC ID#: 2412C4L0070.3488
Lot#: N/A
Batch#: HASHPEAPE-112224
Batch Size: N/A
Manufacture Date: 11/22/2024
Harvest Date: 09/21/2024

Sample Name: Hashish Peachy Pete

Strain Name: Peachy Pete

Matrix: Concentrates_Extracts

Amount Received: 64.9386 g

Sample Collected: 12/24/2024 12:31

Sample Received: 12/24/2024 14:34

Report Created: 12/31/2024 17:36

Pesticides by LC/MS/MS - Compliance

Pass

Date Analyzed: 12/31/2024 Analyst Initials: JCB SOP: SOP-CHEM-013

Analyte	LOQ	Limit	Result	Qualifier	Status	Analyte	LOQ	Limit	Result	Qualifier	Status
	ppm	ppm	ppm				ppm	ppm	ppm		
Abamectin	0.118	0.5	<LOQ		Pass	Imazalil	0.049	0.2	<LOQ		Pass
Acephate	0.098	0.4	<LOQ		Pass	Imidacloprid	0.098	0.4	<LOQ		Pass
Acetamiprid	0.049	0.2	<LOQ		Pass	Kresoxim-methyl	0.098	0.4	<LOQ		Pass
Aldicarb	0.098	0.4	<LOQ		Pass	Malathion	0.049	0.2	<LOQ		Pass
Azoxystrobin	0.049	0.2	<LOQ		Pass	Metalaxyl	0.049	0.2	<LOQ		Pass
Bifenazate	0.049	0.2	<LOQ	V1	Pass	Methiocarb	0.049	0.2	<LOQ		Pass
Bifenthrin	0.049	0.2	<LOQ		Pass	Methomyl	0.098	0.4	<LOQ		Pass
Boscalid	0.196	0.4	<LOQ		Pass	Myclobutanil	0.049	0.2	<LOQ		Pass
Carbaryl	0.049	0.2	<LOQ		Pass	Naled	0.123	0.5	<LOQ	V1	Pass
Carbofuran	0.049	0.2	<LOQ		Pass	Oxamyl	0.246	1.0	<LOQ		Pass
Chlorantraniliprole	0.098	0.2	<LOQ		Pass	Paclobutrazol	0.098	0.4	<LOQ	L1	Pass
Chlorfenapyr	0.491	1.0	<LOQ		Pass	Permethrins	0.049	0.2	<LOQ		Pass
Chlorpyrifos	0.049	0.2	<LOQ		Pass	Phosmet	0.049	0.2	<LOQ		Pass
Clofentezine	0.049	0.2	<LOQ		Pass	Piperonyl butoxide	0.491	2.0	<LOQ		Pass
Cyfluthrin	0.246	1.0	<LOQ		Pass	Prallethrin	0.049	0.2	<LOQ		Pass
Cypermethrin	0.246	1.0	<LOQ		Pass	Propiconazole	0.098	0.4	<LOQ		Pass
Daminozide	0.246	1.0	<LOQ	V1	Pass	Propoxur	0.049	0.2	<LOQ		Pass
Diazinon	0.049	0.2	<LOQ		Pass	Pyrethrins	0.073	1.0	<LOQ	V1	Pass
Dichlorvos	0.025	0.1	<LOQ		Pass	Pyridaben	0.049	0.2	<LOQ		Pass
Dimethoate	0.049	0.2	<LOQ		Pass	Spinosad	0.049	0.2	<LOQ		Pass
Ethoprophos	0.049	0.2	<LOQ		Pass	Spiromesifen	0.049	0.2	<LOQ		Pass
Etofenprox	0.098	0.4	<LOQ		Pass	Spirotetramat	0.049	0.2	<LOQ	V1	Pass
Etoxazole	0.049	0.2	<LOQ		Pass	Spiroxamine	0.098	0.4	<LOQ		Pass
Fenoxycarb	0.049	0.2	<LOQ		Pass	Tebuconazole	0.098	0.4	<LOQ	L1, V1	Pass
Fenpyroximate	0.098	0.4	<LOQ		Pass	Thiacloprid	0.049	0.2	<LOQ		Pass
Fipronil	0.098	0.4	<LOQ		Pass	Thiamethoxam	0.049	0.2	<LOQ		Pass
Flonicamid	0.246	1.0	<LOQ		Pass	Trifloxystrobin	0.049	0.2	<LOQ		Pass
Fludioxonil	0.098	0.4	<LOQ		Pass						
Hexythiazox	0.246	1.0	<LOQ		Pass						

Eloy Operation
300 E Cherry Street
Cottonwood, AZ 86326
16189727426
Lic#: 00000056ESPE92908314

FINAL

Sample: S412065-03
CC ID#: 2412C4L0070.3488
Lot#: N/A
Batch#: HASHPEAPE-112224
Batch Size: N/A
Manufacture Date: 11/22/2024
Harvest Date: 09/21/2024

Sample Name: Hashish Peachy Pete
Strain Name: Peachy Pete
Matrix: Concentrates_Extracts
Amount Received: 64.9386 g

Sample Collected: 12/24/2024 12:31
Sample Received: 12/24/2024 14:34
Report Created: 12/31/2024 17:36

Metals by ICP-MS - Compliance

Pass

Date Analyzed: 12/30/2024 Analyst Initials: JEK SOP: C4-SOP-CHEM-008

Analyte	LOQ	Limit	Result	Qualifier	Status
	ppm	ppm	ppm		
Arsenic	0.100	0.4	<LOQ		Pass
Cadmium	0.100	0.4	<LOQ		Pass
Lead	0.398	1.0	<LOQ		Pass
Mercury	0.040	0.2	<LOQ		Pass

Mycotoxins by LC/MS/MS - Compliance

Pass

Date Analyzed: 12/31/2024 Analyst Initials: JCB SOP: SOP-CHEM-013

Analyte	LOQ	Limit	Result	Qualifier	Status
	ppb	ppb	ppb		
Aflatoxin B1	4.91		<LOQ		
Aflatoxin B2	4.91		<LOQ	I1	
Aflatoxin G1	9.82		<LOQ		
Aflatoxin G2	4.91		<LOQ		
Ochratoxin A	9.82	20	<LOQ	I1, L1, V1	Pass
Total Aflatoxins	4.91	20	<LOQ		Pass

Total Aflatoxins includes Aflatoxins B1, B2, G1, and G2.

Eloy Operation
300 E Cherry Street
Cottonwood, AZ 86326
16189727426
Lic#: 00000056ESPE92908314

FINAL

Sample: S412065-03
CC ID#: 2412C4L0070.3488
Lot#: N/A
Batch#: HASHPEAPE-112224
Batch Size: N/A
Manufacture Date: 11/22/2024
Harvest Date: 09/21/2024

Sample Name: Hashish Peachy Pete
Strain Name: Peachy Pete
Matrix: Concentrates_Extracts
Amount Received: 64.9386 g

Sample Collected: 12/24/2024 12:31
Sample Received: 12/24/2024 14:34
Report Created: 12/31/2024 17:36

Microbials

Pass

E. coli by 3M Petrifilm- Compliance

Date Analyzed: 12/27/2024 Analyst Initials: DHV SOP: SOP-MICRO-010

Analyte	LOQ	Limit	Result	Qualifier	Status
	CFU/g	CFU/g	CFU/g		
<i>E. coli</i>	10	100	<10		Pass

Aspergillus and Salmonella by qPCR - Compliance

Date Analyzed: 12/27/2024 Analyst Initials: DHV SOP: SOP-MICRO-013

Analyte	Result	Qualifier	Status
	in one gram		
<i>Salmonella spp.</i>	Not Detected		Pass
<i>Aspergillus flavus</i> , <i>Aspergillus fumigatus</i> , <i>Aspergillus niger</i> , or <i>Aspergillus terreus</i>	Not Detected		Pass

Salmonella and Aspergillus by Medicinal Genomics.

Eloy Operation
300 E Cherry Street
Cottonwood, AZ 86326
16189727426
Lic#: 00000056ESPE92908314

FINAL

Sample: S412065-03
CC ID#: 2412C4L0070.3488
Lot#: N/A
Batch#: HASHPEAPE-112224
Batch Size: N/A
Manufacture Date: 11/22/2024
Harvest Date: 09/21/2024

Sample Name: Hashish Peachy Pete
Strain Name: Peachy Pete
Matrix: Concentrates_Extracts
Amount Received: 64.9386 g

Sample Collected: 12/24/2024 12:31
Sample Received: 12/24/2024 14:34
Report Created: 12/31/2024 17:36

Residual Solvents by Headspace GC/MS - Compliance

Pass

Date Analyzed: 12/31/2024 Analyst Initials: JCB SOP: SOP-CHEM-005

Analyte	LOD	LOQ	Limit	Result	Qualifier	Status	Analyte	LOD	LOQ	Limit	Result	Qualifier	Status
	ppm	ppm		ppm				ppm	ppm				
Acetone		125.6	1000	<LOQ	Pass		2,2-Dimethylbutane		40.20		<LOQ		
Acetonitrile		50.25	410	<LOQ	Pass		2-methylpentane/		80.40		<LOQ		
Benzene		1.005	2	<LOQ	Pass		2,3-dimethylbutane						
Butanes		628.1	5000	<LOQ	Pass		2-Propanol (IPA)		628.1	5000	<LOQ		Pass
n-Butane		628.1		<LOQ			Isopropyl acetate		628.1	5000	<LOQ		Pass
iso-Butane		628.1		<LOQ			Methanol		376.9	3000	<LOQ		Pass
Chloroform		15.08	60	<LOQ	Pass		Pentanes		628.1	5000	<LOQ		Pass
Dichloromethane		75.38	600	<LOQ	Pass		n-Pentane		628.1		<LOQ		
Ethanol		628.1	5000	<LOQ	Pass		iso-pentane		628.1		<LOQ		
Ethyl acetate		628.1	5000	<LOQ	Pass		neo-Pentane		628.1		<LOQ		
Diethyl Ether		628.1	5000	<LOQ	Pass		Toluene		115.6	890	<LOQ		Pass
n-Heptane		628.1	5000	<LOQ	Pass		Xylenes		276.4	2170	<LOQ		Pass
Hexanes		40.20	290	<LOQ	Pass		m/p-Xylene		552.8		<LOQ		
n-Hexane		40.20		<LOQ			o-Xylene		276.4		<LOQ		
3-Methylpentane		40.20		<LOQ			Ethyl benzene		276.4		<LOQ		

Eloy Operation
300 E Cherry Street
Cottonwood, AZ 86326
16189727426
Lic#: 00000056ESPE92908314

FINAL

Sample: S412065-03
CC ID#: 2412C4L0070.3488
Lot#: N/A
Batch#: HASHPEAPE-112224
Batch Size: N/A
Manufacture Date: 11/22/2024
Harvest Date: 09/21/2024

Sample Name: Hashish Peachy Pete
Strain Name: Peachy Pete
Matrix: Concentrates_Extracts
Amount Received: 64.9386 g

Sample Collected: 12/24/2024 12:31
Sample Received: 12/24/2024 14:34
Report Created: 12/31/2024 17:36

Notes and Definitions

Item	Definition
I1	Interference. Relative intensity of a characteristic ion in the sample analyte exceeded 30% of the relative intensity in the reference spectrum.
L1	The percent recovery of the LCS was above the control limit for the test but analyte was not detected above the Action Limit in Table 3.1.
Q3	Testing result is for informational purposes only and cannot be used to satisfy dispensary testing requirements in R9-17-317.01(A) or labeling requirements in R9-17-317. Testing result is not accredited under ISO 17025.
V1	The recovery from initial or continuing calibration verification standards is greater than the acceptance limits, but the sample's target analytes were not detected above the maximum allowable concentrations in Table 3.1 for the analytes in the sample.
< LOQ	Results below the Limit of Quantification.
ND	Not Detected
Limit	Maximum allowable concentration as defined by Table 3.1 in Arizona Administrative code (A.A.C.) Title 9, Chapter 17
CFU/g	Colony forming units per gram
ppm	Parts per million
ppb	Parts per billion
NT	Not Tested
Sum of Cannabinoids = THCA + d9-THC + CBDA + CBD + d8-THC + CBG + CBN + CBC	
Total Cannabinoids = Total THC + Total CBD + d8-THC + CBG + CBN + CBC	

CASE NARRATIVE

Production Method: Ice/Water
Classification: Hybrid

ARIZONA DEPARTMENT OF HEALTH SERVICES' WARNING:

Marijuana use can be addictive and can impair an individual's ability to drive a motor vehicle or operate heavy machinery. Marijuana smoke contains carcinogens and can lead to an increased risk for cancer, tachycardia, hypertension, heart attack, and lung infection. Marijuana use may affect the health of a pregnant woman and the unborn child. KEEP OUT OF REACH OF CHILDREN. Using Marijuana during pregnancy could cause birth defects or other health issues to your unborn child.